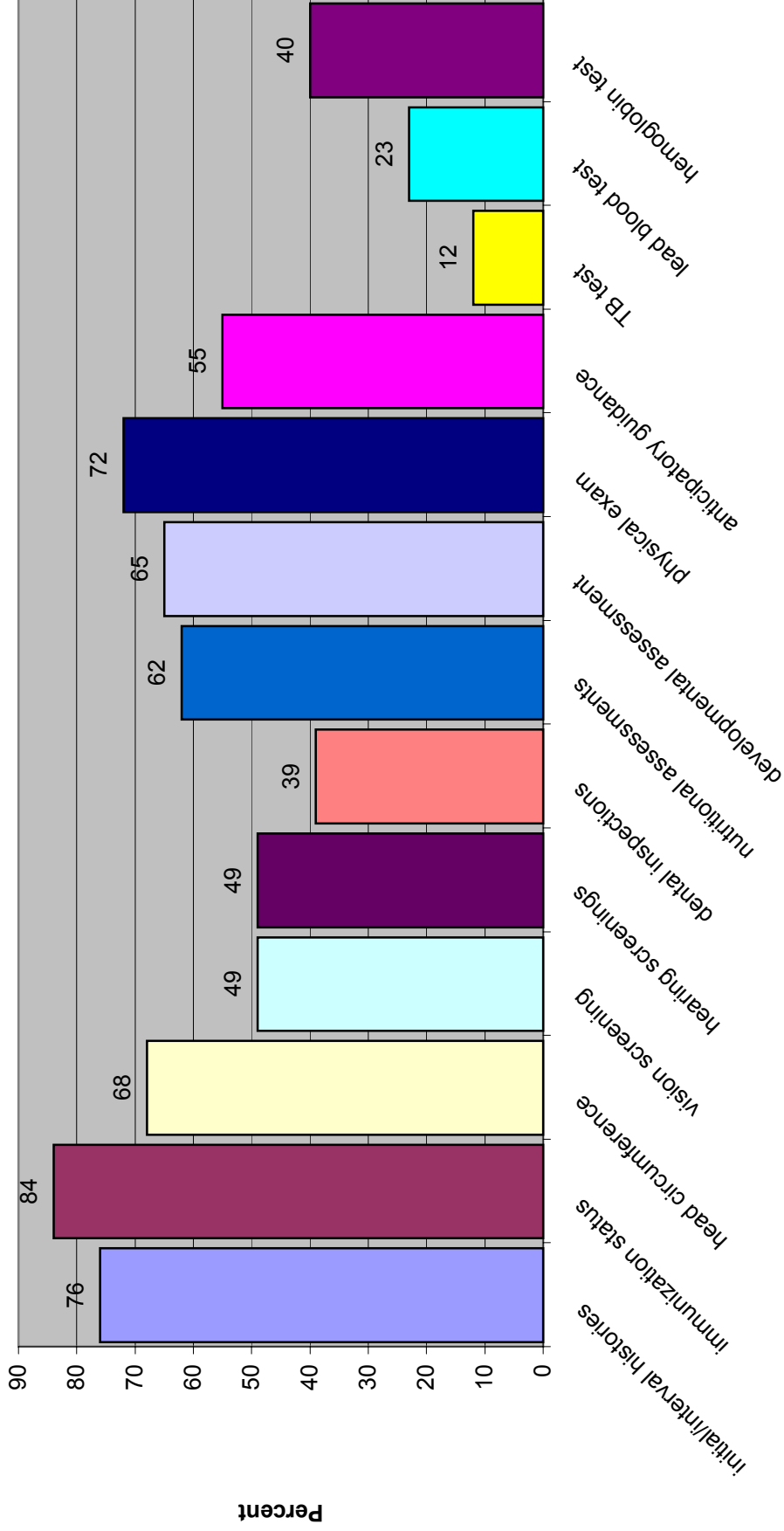
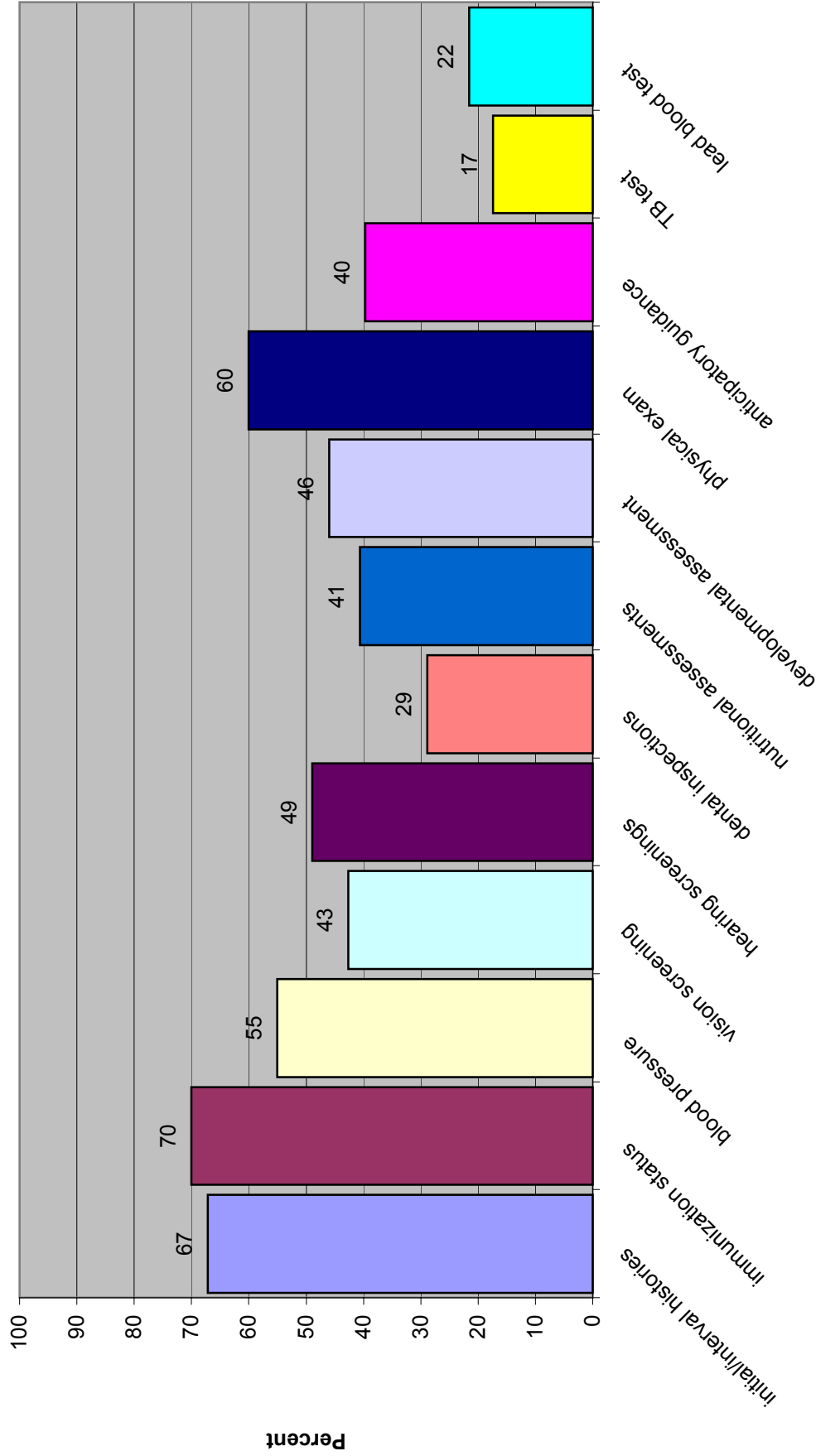


**Percent of Michigan Children enrolled in Medicaid Managed Care Plans
who Received EPSDT Services by Component and Age (1999)
Ages 0-2 (N=1,482)**



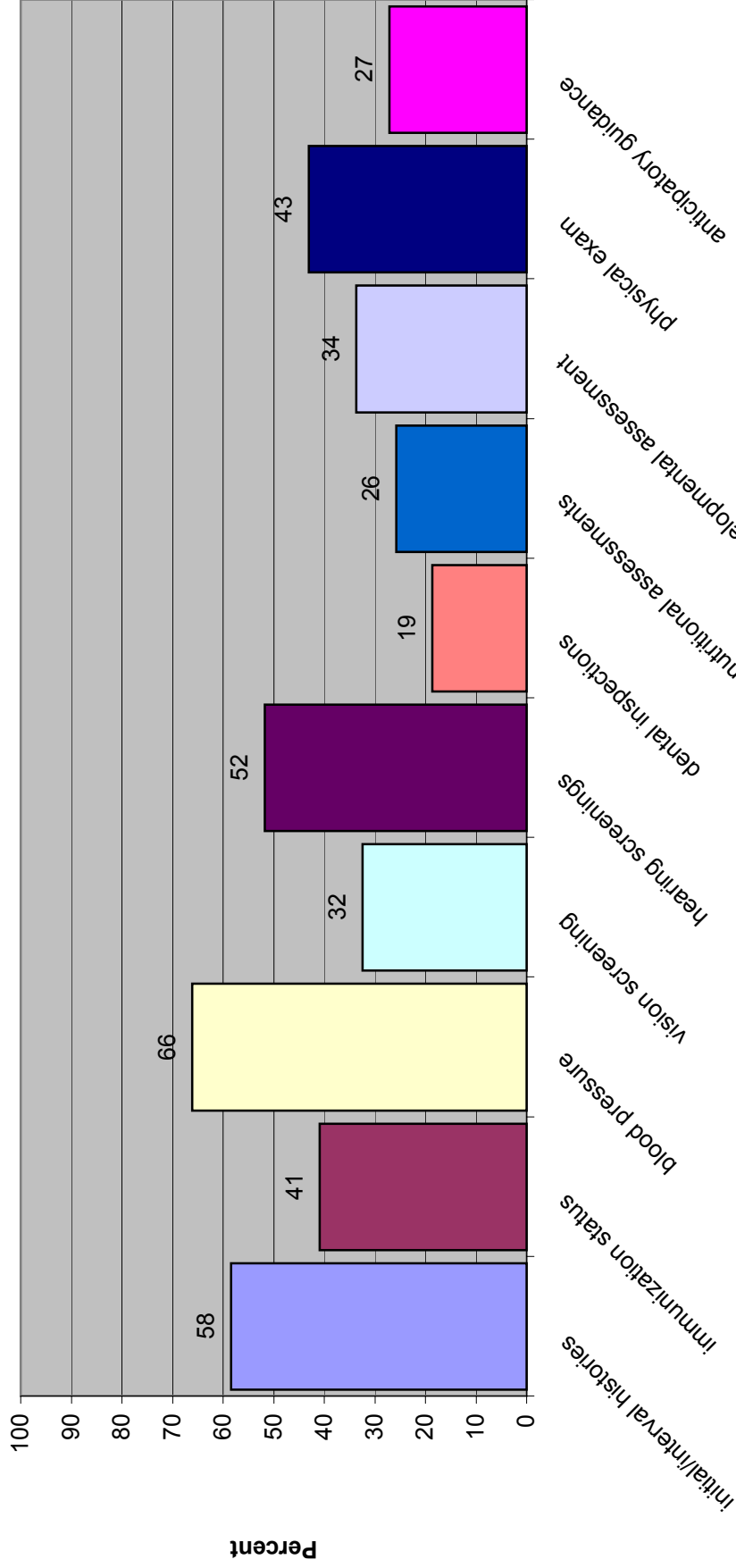
EPSDT Components (excludes one or more EPSDT service component, height, weight and interpretive conference)

**Percent of Michigan Children enrolled in Medicaid Managed Care Plans
who Received EPSDT Services by Component and Age (1999)
Ages 3-6 (N=1,630)**



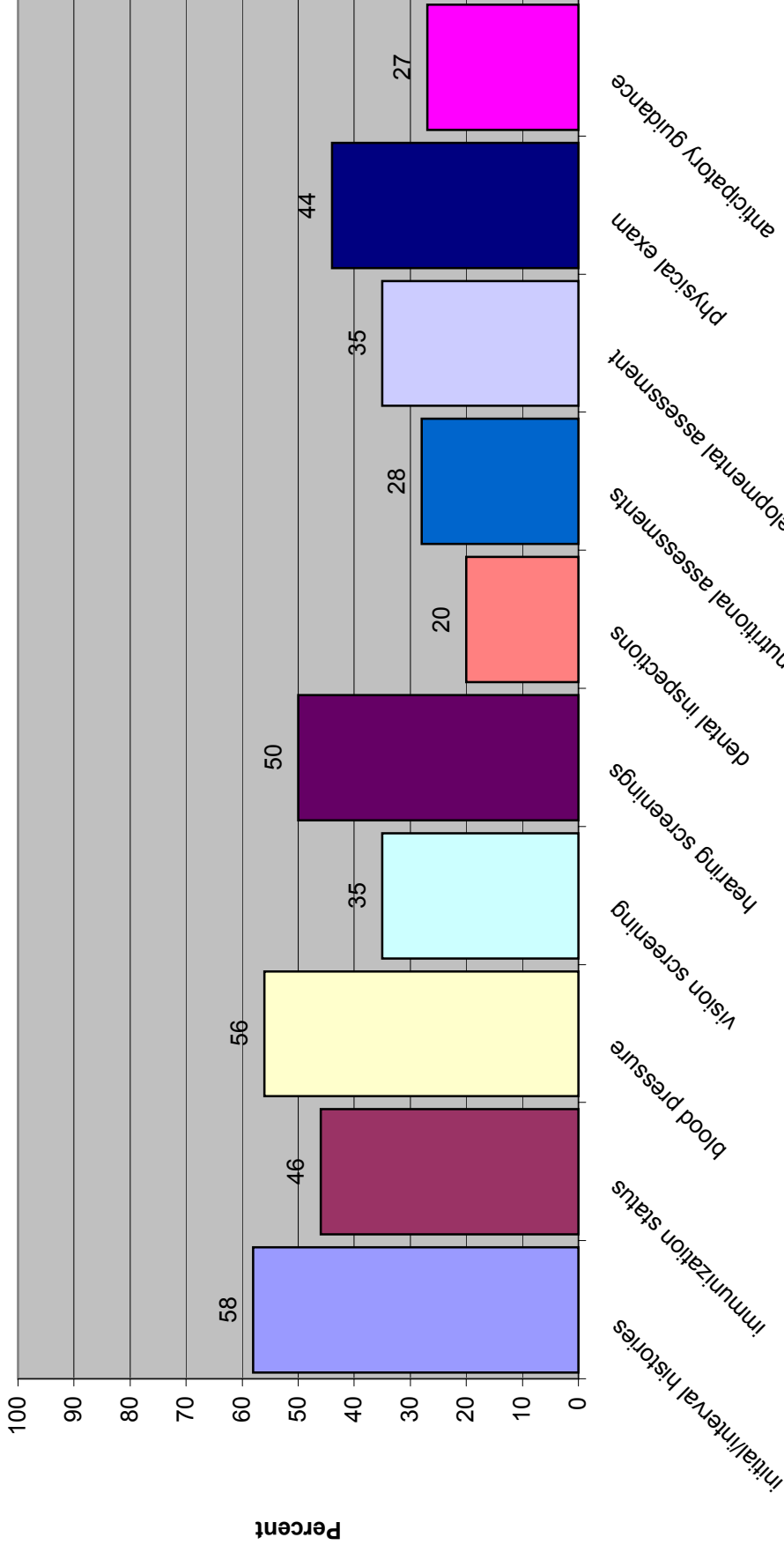
EPSDT Components (excludes one or more EPSDT service component, height, weight and interpretive conference)

**Percent of Michigan Children enrolled in Medicaid Managed Care Plans
who Received EPSDT Services by Component and Age (1999)
Ages 7-21 (N=3,096)**



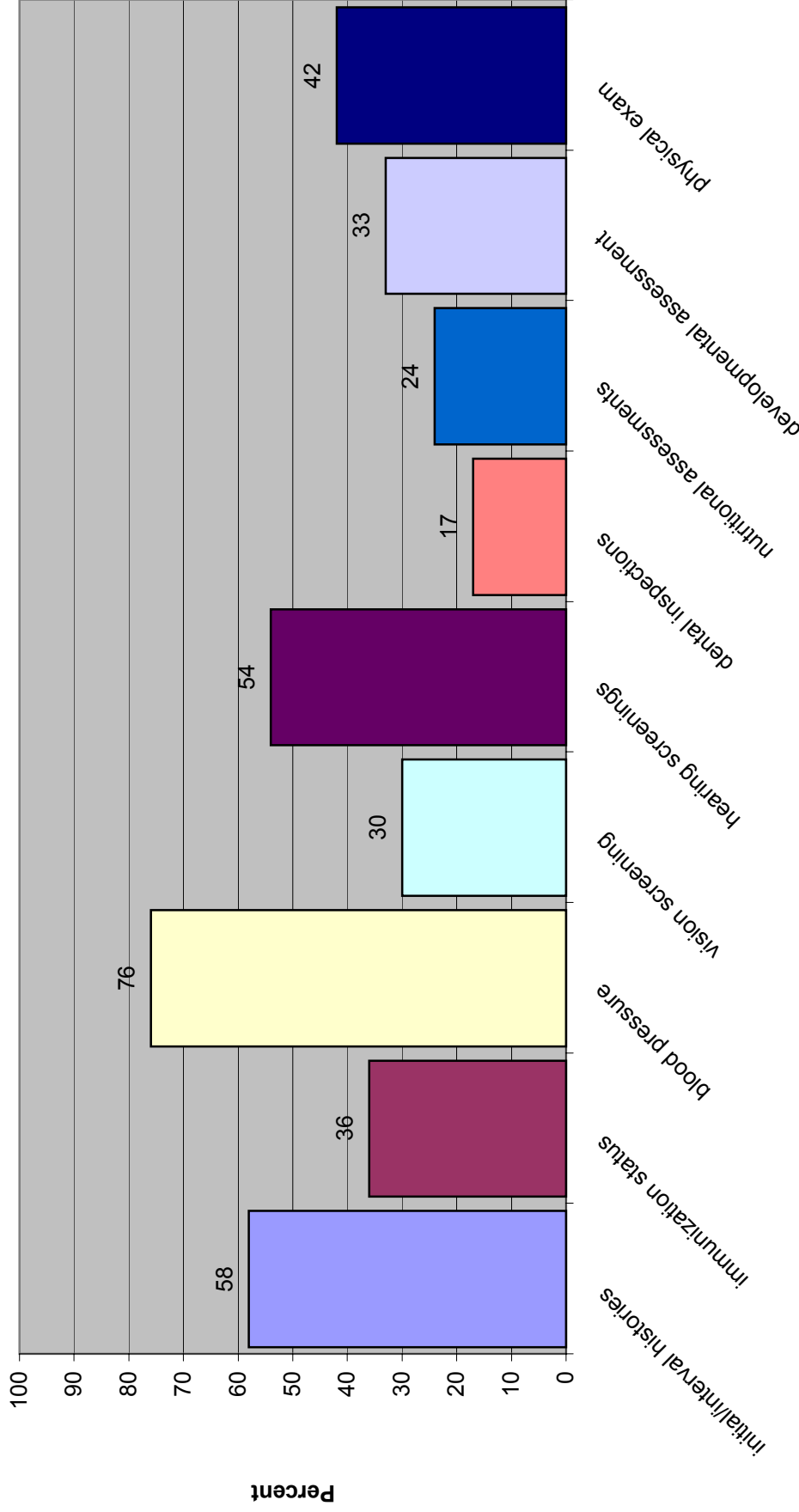
EPSDT Components (excludes one or more EPSDT service component, height, weight and interpretive conference)

**Percent of Michigan Children enrolled in Medicaid Managed Care Plans
who Received EPSDT Services by Component and Age (1999)
Ages 7-12 (N=1,590)**



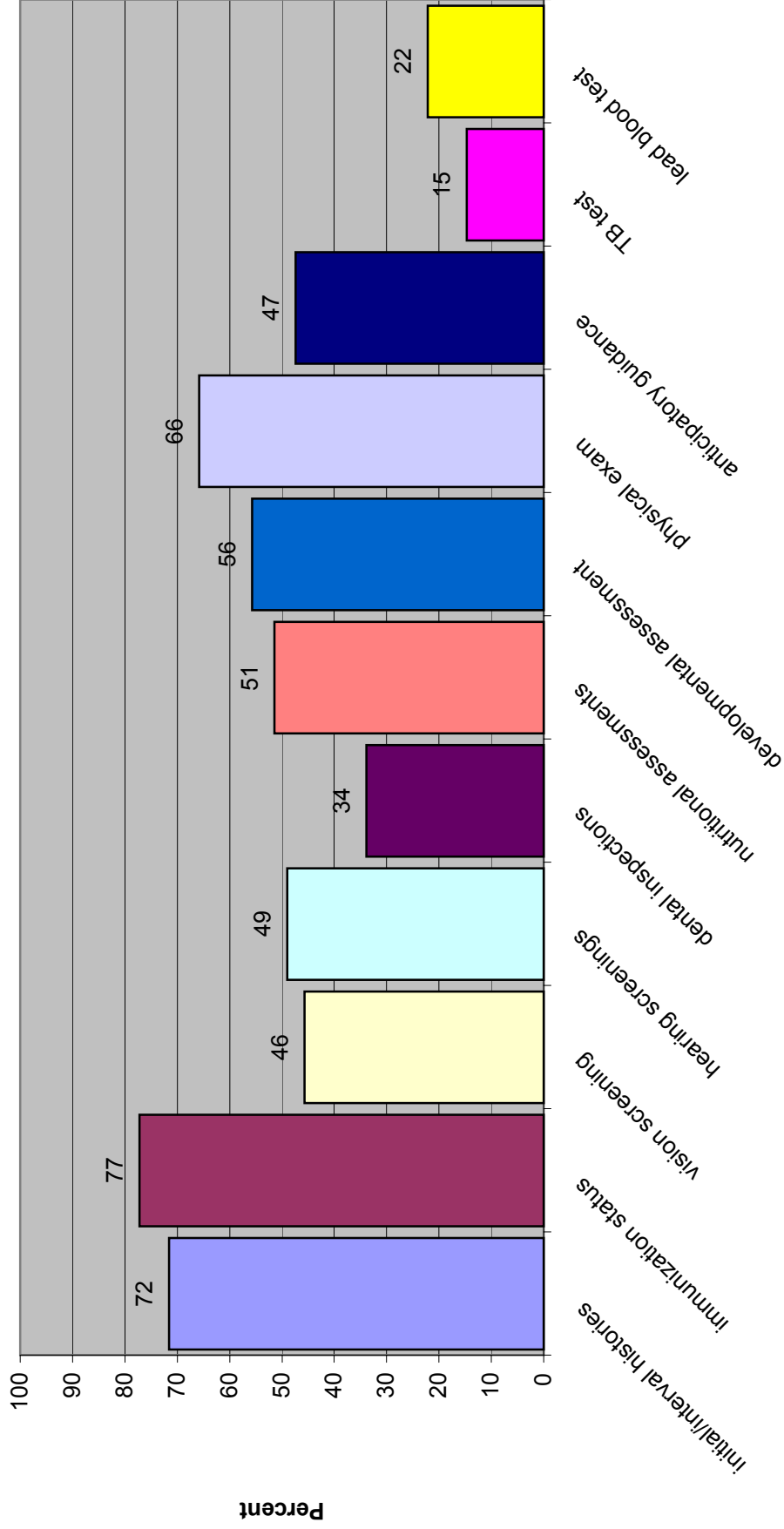
EPSDT Components (excludes one or more EPSDT service component, height, weight and interpretive conference)

**Percent of Michigan Children enrolled in Medicaid Managed Care Plans
who Received EPSDT Services by Component and Age (1999)
Ages 13-21 (N=1,506)**



EPSDT Components (excludes one or more EPSDT service component, height, weight and interpretive conference)

**Percent of Michigan Children enrolled in Medicaid Managed Care Plans
who Received EPSDT Services by Component and Age (1999)
Ages 0-6 (N=3,112)**



EPSDT Components (excludes one or more EPSDT service component, height, weight and interpretive conference)

EPSDT for all health care plans by age group (1999)

ages 0-2

initial/inter	76
immunizati	84
head circui	68
vision scre	49
hearing sc	49
dental insp	39
nutritional	62
developme	65
physical e.	72
anticipator	55
TB test	12
lead blood	23
hemoglobin	40

*excludes one or more epsdt service components, height, weight, interpretive conf.

*Data only captures children receiving one EPSDT component who have been enrolled in t

*averages of percents as opposed to averages of the absolute frequencies

ages 3-6

initial/inter	67
immunizati	70
blood pres:	55
vision scre	43
hearing sc	49
dental insp	29
nutritional	41
developme	46
physical e.	60
anticipator	40
TB test	17
lead blood	22

*excludes one or more epsdt service components, height, weight, interpretive conf.

*Data only captures children receiving one EPSDT component who have been enrolled in t

*averages of percents as opposed to averages of the absolute frequencies

average of ages 0-6

initial/inter	72
immunizati	77
vision scre	46
hearing sc	49
dental insp	34
nutritional	51
developme	56
physical e.	66
anticipator	47
TB test	15
lead blood	22

ages 7-12

initial/inter	58
immunizati	46
blood pres	56
vision scre	35
hearing sc	50
dental insp	20
nutritional	28
developme	35
physical e	44
anticipator	27

*excludes one or more epsdt service components, height, weight, interpretive conf.

*Data only captures children receiving one EPSDT component who have been enrolled in t

*averages of percents as opposed to averages of the absolute frequencies

ages 13-21

initial/inter	58
immunizati	36
blood pres	76
vision scre	30
hearing sc	54
dental insp	17
nutritional	24
developme	33
physical e	42
anticipator	27

*excludes one or more epsdt service components, height, weight, interpretive conf.

*Data only captures children receiving one EPSDT component who have been enrolled in t

*averages of percents as opposed to averages of the absolute frequencies

average for ages 7-21

initial/inter	58
immunizati	41
blood pres	66
vision scre	32
hearing sc	52
dental insp	19
nutritional	26
developme	34
physical e	43
anticipator	27

*excludes one or more epsdt service components, height, weight, interpretive conf.

*Data only captures children receiving one EPSDT component who have been enrolled in t

*averages encompass an average of averages, thus the data may be weak

the plan for one-year

the plan for one-year

:he plan for one-year

:he plan for one-year

:he plan for one-year